



# Club Med 東澳島 Premium Resort (珠海)

## 套票包括 Package Price Includes :

- ~ 來回香港至珠海船票乙張  
Round trip Hong Kong & Zhuhai ferry ticket
- ~ 碼頭酒店來回接送 Roundtrip airport transfer by ferry
- ~ 2/3晚酒店住宿 2/3 nights accommodation
- ~ 每日3餐、全天飲品及小食 3 meals, open bar & snacking daily
- ~ 度假村內水上及陸上活動連教練  
All sporting facilities with tuition
- ~ 兒童與青少年(4-17歲)俱樂部設施 Children's clubs facilities
- ~ 晚間娛樂節目 Evening entertainment



### 4-Days 3-Nights Ferry Package - SUN/WED; MON/THU; TUE/FRI

Departure dates :	Deluxe Room				Deluxe Room with Sea View				Suite				Oceanview Suite			
	Adult	Child 5-11	Child 4	Child 2-3	Adult	Child 5-11	Child 4	Child 2-3	Adult	Child 5-11	Child 4	Child 2-3	Adult	Child 5-11	Child 4	Child 2-3
Dec 04 - Dec 13	3,671	2,483	2,335	257	3,977	2,663	2,515	257	5,183	3,383	3,235	257	5,777	3,743	3,595	257
Dec 18 - Dec 20	4,805	3,149	3,001	257	5,219	3,401	3,253	257	6,875	4,391	4,243	257	7,703	4,895	4,747	257
Dec 25 - Dec 27	5,395	3,541	3,392	324	5,863	3,811	3,662	324	7,735	4,945	4,796	324	8,671	5,503	5,354	324
Jan 01	4,775	3,143	2,995	257	5,189	3,383	3,235	257	6,839	4,379	4,231	257	7,661	4,871	4,723	257
Jan 02	4,223	2,813	2,665	257	4,583	3,023	2,875	257	6,011	3,881	3,733	257	6,719	4,307	4,159	257
Jan 03 - Jan 23	3,671	2,483	2,335	257	3,977	2,663	2,515	257	5,183	3,383	3,235	257	5,777	3,743	3,595	257
Jan 24	4,397	2,915	2,767	257	4,775	3,143	2,995	257	6,269	4,037	3,889	257	7,013	4,481	4,333	257
Jan 29 - Jan 31	6,349	4,107	3,958	324	6,915	4,458	4,309	324	9,157	5,803	5,654	324	10,288	6,466	6,317	324
Feb 05	4,397	2,915	2,767	257	4,775	3,143	2,995	257	6,269	4,037	3,889	257	7,013	4,481	4,333	257
Feb 06 - Apr 04	3,671	2,483	2,335	257	3,977	2,663	2,515	257	5,183	3,383	3,235	257	5,777	3,743	3,595	257
Apr 09 - Apr 11	4,427	2,933	2,785	257	4,805	3,149	3,001	257	6,317	4,067	3,919	257	7,073	4,517	4,369	257
Apr 16 - Apr 17	4,495	3,001	2,852	324	4,873	3,217	3,068	324	6,385	4,135	3,986	324	7,141	4,585	4,436	324
Apr 18	4,427	2,933	2,785	257	4,805	3,149	3,001	257	6,317	4,067	3,919	257	7,073	4,517	4,369	257
Apr 23	3,923	2,633	2,485	257	4,253	2,825	2,677	257	5,561	3,611	3,463	257	6,209	4,001	3,853	257
Apr 24 - Apr 25	3,671	2,483	2,335	257	3,977	2,663	2,515	257	5,183	3,383	3,235	257	5,777	3,743	3,595	257

### 4-Days 3-Nights Ferry Package - WED/SAT; SAT/TUE

Departure dates :	Deluxe Room				Deluxe Room with Sea View				Suite				Oceanview Suite			
	Adult	Child 5-11	Child 4	Child 2-3	Adult	Child 5-11	Child 4	Child 2-3	Adult	Child 5-11	Child 4	Child 2-3	Adult	Child 5-11	Child 4	Child 2-3
Dec 03 - Dec 14	3,923	2,633	2,485	257	4,253	2,825	2,677	257	5,561	3,611	3,463	257	6,209	4,001	3,853	257
Dec 17 - Dec 21	4,805	3,149	3,001	257	5,219	3,401	3,253	257	6,875	4,391	4,243	257	7,703	4,895	4,747	257
Dec 24	5,395	3,541	3,392	324	5,863	3,811	3,662	324	7,735	4,945	4,796	324	8,671	5,503	5,354	324
Dec 28 - Dec 31	5,327	3,473	3,325	257	5,795	3,743	3,595	257	7,667	4,877	4,729	257	8,603	5,435	5,287	257
Jan 04 - Jan 21	3,923	2,633	2,485	257	4,253	2,825	2,677	257	5,561	3,611	3,463	257	6,209	4,001	3,853	257
Jan 25	5,563	3,639	3,490	324	6,050	3,938	3,789	324	7,981	5,095	4,946	324	8,949	5,667	5,518	324
Jan 28	6,349	4,107	3,958	324	6,915	4,458	4,309	324	9,157	5,803	5,654	324	10,288	6,466	6,317	324
Feb 01	6,281	4,039	3,891	257	6,847	4,390	4,242	257	9,089	5,735	5,587	257	10,220	6,398	6,250	257
Feb 04	5,495	3,571	3,423	257	5,982	3,870	3,722	257	7,913	5,027	4,879	257	8,881	5,599	5,451	257
Feb 08 - Apr 05	3,923	2,633	2,485	257	4,253	2,825	2,677	257	5,561	3,611	3,463	257	6,209	4,001	3,853	257
Apr 08 - Apr 12	4,427	2,933	2,785	257	4,805	3,149	3,001	257	6,317	4,067	3,919	257	7,073	4,517	4,369	257
Apr 15	4,495	3,001	2,852	324	4,873	3,217	3,068	324	6,385	4,135	3,986	324	7,141	4,585	4,436	324
Apr 19	4,427	2,933	2,785	257	4,805	3,149	3,001	257	6,317	4,067	3,919	257	7,073	4,517	4,369	257
Apr 22	4,175	2,783	2,635	257	4,529	2,987	2,839	257	5,939	3,839	3,691	257	6,641	4,259	4,111	257
Apr 26	3,923	2,633	2,485	257	4,253	2,825	2,677	257	5,561	3,611	3,463	257	6,209	4,001	3,853	257

# Club Med 東澳島Premium Resort (珠海)

## 4-Days 3-Nights Ferry Package - THU/SUN; FRI/MON

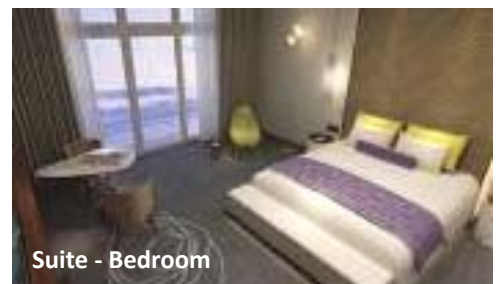
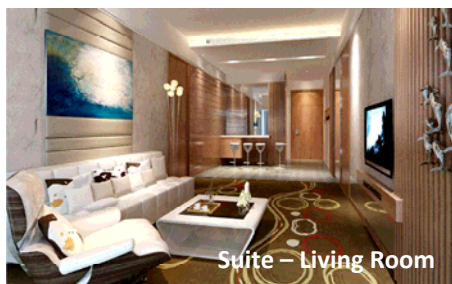
Departure dates :	Child				Child				Child				Child			
	Adult	5-11	4	2-3	Adult	5-11	4	2-3	Adult	5-11	4	2-3	Adult	5-11	4	2-3
Dec 01 - Dec 09	4,175	2,783	2,635	257	4,529	2,987	2,839	257	5,939	3,839	3,691	257	6,641	4,259	4,111	257
Dec 15	4,301	2,855	2,707	257	4,667	3,071	2,923	257	6,125	3,947	3,799	257	6,851	4,385	4,237	257
Dec 16	4,679	3,077	2,929	257	5,081	3,317	3,169	257	6,689	4,283	4,135	257	7,493	4,769	4,621	257
Dec 22	4,979	3,257	3,109	257	5,411	3,515	3,367	257	7,139	4,553	4,405	257	8,003	5,075	4,927	257
Dec 23	5,221	3,433	3,284	324	5,671	3,697	3,548	324	7,471	4,783	4,634	324	8,371	5,323	5,174	324
Dec 29 - Dec 30	5,327	3,473	3,325	257	5,795	3,743	3,595	257	7,667	4,877	4,729	257	8,603	5,435	5,287	257
Jan 05 - Jan 20	4,175	2,783	2,635	257	4,529	2,987	2,839	257	5,939	3,839	3,691	257	6,641	4,259	4,111	257
Jan 26 - Jan 27	6,349	4,107	3,958	324	6,915	4,458	4,309	324	9,157	5,803	5,654	324	10,288	6,466	6,317	324
Feb 02 - Feb 03	6,281	4,039	3,891	257	6,847	4,390	4,242	257	9,089	5,735	5,587	257	10,220	6,398	6,250	257
Feb 09 - Apr 06	4,175	2,783	2,635	257	4,529	2,987	2,839	257	5,939	3,839	3,691	257	6,641	4,259	4,111	257
Apr 07 - Apr 13	4,427	2,933	2,785	257	4,805	3,149	3,001	257	6,317	4,067	3,919	257	7,073	4,517	4,369	257
Apr 14	4,495	3,001	2,852	324	4,873	3,217	3,068	324	6,385	4,135	3,986	324	7,141	4,585	4,436	324
Apr 20 - Apr 21	4,427	2,933	2,785	257	4,805	3,149	3,001	257	6,317	4,067	3,919	257	7,073	4,517	4,369	257
Apr 27 - Apr 28	4,175	2,783	2,635	257	4,529	2,987	2,839	257	5,939	3,839	3,691	257	6,641	4,259	4,111	257



Surcharge of HK\$170 per night is required per pair of connecting room.

### Extension Night (Original Price) -- Per person per night

Stay Period:	Deluxe Room				Deluxe Room with Sea View				Suite				Oceanview Suite				
	Adult	Child 5-11	Child 4	Child 2-3	Adult	Child 5-11	Child 4	Child 2-3	Adult	Child 5-11	Child 4	Child 2-3	Adult	Child 5-11	Child 4	Child 2-3	
Dec 01 - Dec 16 Jan 03 - Jan 25 Feb 06 - Apr 07 Apr 24 - Apr 30	Sun-Thu	1,670	1,010	1,010	---	1,840	1,110	1,110	---	2,510	1,510	1,510	---	2,840	1,710	1,710	---
	Fri-Sat	2,090	1,260	1,260	---	2,300	1,380	1,380	---	3,140	1,890	1,890	---	3,560	2,140	2,140	---
Dec 17 - Dec 23	Sun-Mon	2,300	1,380	1,380	---	2,530	1,520	1,520	---	3,450	2,070	2,070	---	3,910	2,350	2,350	---
Dec 24 - Jan 02	Sun-Mon	2,590	1,560	1,560	---	2,850	1,710	1,710	---	3,890	2,340	2,340	---	4,410	2,650	2,650	---
Jan 26 - Feb 05	Sun-Mon	2,880	1,730	1,730	---	3,170	1,910	1,910	---	4,320	2,600	2,600	---	4,900	2,940	2,940	---
Apr 08 - Apr 23	Sun-Mon	2,090	1,260	1,260	---	2,300	1,380	1,380	---	3,140	1,890	1,890	---	3,560	2,140	2,140	---





# Club Med 東澳島 Premium Resort (珠海)

## 3-Days 2-Nights Ferry Package - SUN/TUE; MON/WED; TUE/THU; WED/FRI

Departure dates :	Deluxe Room				Deluxe Room with Sea View				Suite				Oceanview Suite			
	Adult	Child 5-11	Child 4	Child 2-3	Adult	Child 5-11	Child 4	Child 2-3	Adult	Child 5-11	Child 4	Child 2-3	Adult	Child 5-11	Child 4	Child 2-3
Dec 04 - Dec 14	3,003	2,079	1,931	257	3,241	2,219	2,071	257	4,179	2,779	2,631	257	4,641	3,059	2,911	257
Dec 18 - Dec 21	3,885	2,597	2,449	257	4,207	2,793	2,645	257	5,495	3,563	3,415	257	6,139	3,955	3,807	257
Dec 25 - Dec 27	4,359	2,917	2,768	324	4,723	3,127	2,978	324	6,179	4,009	3,860	324	6,907	4,443	4,294	324
Dec 28 - Jan 01	4,291	2,849	2,701	257	4,655	3,059	2,911	257	6,111	3,941	3,793	257	6,839	4,375	4,227	257
Jan 02	3,647	2,464	2,316	257	3,948	2,639	2,491	257	5,145	3,360	3,212	257	5,740	3,717	3,569	257
Jan 03 - Jan 24	3,003	2,079	1,931	257	3,241	2,219	2,071	257	4,179	2,779	2,631	257	4,641	3,059	2,911	257
Jan 25	3,918	2,651	2,502	324	4,240	2,847	2,698	324	5,514	3,610	3,461	324	6,151	3,988	3,839	324
Jan 29 - Jan 31	5,053	3,328	3,179	324	5,488	3,598	3,449	324	7,213	4,633	4,484	324	8,083	5,143	4,994	324
Feb 05	3,850	2,583	2,435	257	4,172	2,779	2,631	257	5,446	3,542	3,394	257	6,083	3,920	3,772	257
Feb 06 - Apr 05	3,003	2,079	1,931	257	3,241	2,219	2,071	257	4,179	2,779	2,631	257	4,641	3,059	2,911	257
Apr 09 - Apr 12	3,591	2,429	2,281	257	3,885	2,597	2,449	257	5,061	3,311	3,163	257	5,649	3,661	3,513	257
Apr 16 - Apr 17	3,659	2,497	2,348	324	3,953	2,665	2,516	324	5,129	3,379	3,230	324	5,717	3,729	3,580	324
Apr 18 - Apr 19	3,591	2,429	2,281	257	3,885	2,597	2,449	257	5,061	3,311	3,163	257	5,649	3,661	3,513	257
Apr 23	3,297	2,254	2,106	257	3,563	2,408	2,260	257	4,620	3,045	2,897	257	5,145	3,360	3,212	257
Apr 24 - Apr 26	3,003	2,079	1,931	257	3,241	2,219	2,071	257	4,179	2,779	2,631	257	4,641	3,059	2,911	257

## 3-Days 2-Nights Ferry Package - THU/SAT; SAT/MON

Departure dates :	Deluxe Room				Deluxe Room with Sea View				Suite				Oceanview Suite			
	Adult	Child 5-11	Child 4	Child 2-3	Adult	Child 5-11	Child 4	Child 2-3	Adult	Child 5-11	Child 4	Child 2-3	Adult	Child 5-11	Child 4	Child 2-3
Dec 01 - Dec 15	3,297	2,254	2,106	257	3,563	2,408	2,260	257	4,620	3,045	2,897	257	5,145	3,360	3,212	257
Dec 17 - Dec 22	3,885	2,597	2,449	257	4,207	2,793	2,645	257	5,495	3,563	3,415	257	6,139	3,955	3,807	257
Dec 24	4,359	2,917	2,768	324	4,723	3,127	2,978	324	6,179	4,009	3,860	324	6,907	4,443	4,294	324
Dec 29 - Dec 31	4,291	2,849	2,701	257	4,655	3,059	2,911	257	6,111	3,941	3,793	257	6,839	4,375	4,227	257
Jan 05 - Jan 21	3,297	2,254	2,106	257	3,563	2,408	2,260	257	4,620	3,045	2,897	257	5,145	3,360	3,212	257
Jan 26 - Jan 28	5,053	3,328	3,179	324	5,488	3,598	3,449	324	7,213	4,633	4,484	324	8,083	5,143	4,994	324
Feb 02 - Feb 04	4,985	3,260	3,112	257	5,420	3,530	3,382	257	7,145	4,565	4,417	257	8,015	5,075	4,927	257
Feb 09 - Apr 06	3,297	2,254	2,106	257	3,563	2,408	2,260	257	4,620	3,045	2,897	257	5,145	3,360	3,212	257
Apr 08 - Apr 13	3,591	2,429	2,281	257	3,885	2,597	2,449	257	5,061	3,311	3,163	257	5,649	3,661	3,513	257
Apr 15	3,659	2,497	2,348	324	3,953	2,665	2,516	324	5,129	3,379	3,230	324	5,717	3,729	3,580	324
Apr 20 - Apr 22	3,591	2,429	2,281	257	3,885	2,597	2,449	257	5,061	3,311	3,163	257	5,649	3,661	3,513	257
Apr 27 - Apr 29	3,297	2,254	2,106	257	3,563	2,408	2,260	257	4,620	3,045	2,897	257	5,145	3,360	3,212	257

## 3-Days 2-Nights Ferry Package - FRI/SUN

Departure dates :	Deluxe Room				Deluxe Room with Sea View				Suite				Oceanview Suite			
	Adult	Child 5-11	Child 4	Child 2-3	Adult	Child 5-11	Child 4	Child 2-3	Adult	Child 5-11	Child 4	Child 2-3	Adult	Child 5-11	Child 4	Child 2-3
Dec 02 - Dec 09	3,591	2,429	2,281	257	3,885	2,597	2,449	257	5,061	3,311	3,163	257	5,649	3,661	3,513	257
Dec 16	3,738	2,513	2,365	257	4,046	2,695	2,547	257	5,278	3,437	3,289	257	5,894	3,808	3,660	257
Dec 23	4,156	2,791	2,642	324	4,499	2,994	2,845	324	5,871	3,820	3,671	324	6,557	4,233	4,084	324
Dec 30	4,291	2,849	2,701	257	4,655	3,059	2,911	257	6,111	3,941	3,793	257	6,839	4,375	4,227	257
Jan 06 - Jan 20	3,591	2,429	2,281	257	3,885	2,597	2,449	257	5,061	3,311	3,163	257	5,649	3,661	3,513	257
Jan 27	5,053	3,328	3,179	324	5,488	3,598	3,449	324	7,213	4,633	4,484	324	8,083	5,143	4,994	324
Feb 03	4,985	3,260	3,112	257	5,420	3,530	3,382	257	7,145	4,565	4,417	257	8,015	5,075	4,927	257
Feb 10 - Apr 07	3,591	2,429	2,281	257	3,885	2,597	2,449	257	5,061	3,311	3,163	257	5,649	3,661	3,513	257
Apr 14	3,659	2,497	2,348	324	3,953	2,665	2,516	324	5,129	3,379	3,230	324	5,717	3,729	3,580	324
Apr 21 - Apr 28	3,591	2,429	2,281	257	3,885	2,597	2,449	257	5,061	3,311	3,163	257	5,649	3,661	3,513	257

# Club Med 東澳島Premium Resort (珠海)



Surcharge of HK\$170 per night is required per pair of connecting room.

Extension Night (Original Price) -- Per person per night

Stay Period:	Deluxe Room				Deluxe Room with Sea View				Suite				Oceanview Suite				
	Adult	Child 5-11	Child 4	Child 2-3	Adult	Child 5-11	Child 4	Child 2-3	Adult	Child 5-11	Child 4	Child 2-3	Adult	Child 5-11	Child 4	Child 2-3	
Dec 01 - Dec 16 Jan 03 - Jan 25 Feb 06 - Apr 07 Apr 24 - Apr 30	Sun-Thu	1,670	1,010	1,010	---	1,840	1,110	1,110	---	2,510	1,510	1,510	---	2,840	1,710	1,710	---
	Fri-Sat	2,090	1,260	1,260	---	2,300	1,380	1,380	---	3,140	1,890	1,890	---	3,560	2,140	2,140	---
Dec 17 - Dec 23	Sun-Mon	2,300	1,380	1,380	---	2,530	1,520	1,520	---	3,450	2,070	2,070	---	3,910	2,350	2,350	---
Dec 24 - Jan 02	Sun-Mon	2,590	1,560	1,560	---	2,850	1,710	1,710	---	3,890	2,340	2,340	---	4,410	2,650	2,650	---
Jan 26 - Feb 05	Sun-Mon	2,880	1,730	1,730	---	3,170	1,910	1,910	---	4,320	2,600	2,600	---	4,900	2,940	2,940	---
Apr 08 - Apr 23	Sun-Mon	2,090	1,260	1,260	---	2,300	1,380	1,380	---	3,140	1,890	1,890	---	3,560	2,140	2,140	---

### Transportation

Schedule Ferry (70 mins): Hong Kong-China Ferry Terminal (Tsim Sha Tsui) - Zhuhai Jiuzhou Ferry Terminal - Hong Kong-Macau Ferry Terminal (Sheung Wan)  
Charter Ferry (45 mins): Zhuhai Jiuzhou Ferry Terminal - Dong'ao Island - Zhuhai Jiuzhou Ferry Terminal

Ferry Schedule: (Departure)	Hong Kong-China Ferry Terminal (Tsim Sha Tsui) - Zhuhai Jiuzhou Ferry Terminal	1130	-	1240
	or Hong Kong-Macau Ferry Terminal (Sheung Wan) - Zhuhai Jiuzhou Ferry Terminal	1230	-	1340
	Zhuhai Jiuzhou Ferry Terminal - Dong'ao Island	1450	-	1535
(Return)	Dong'ao Island - Zhuhai Jiuzhou Ferry Terminal	1610	-	1655
	Zhuhai Jiuzhou Ferry Terminal - Hong Kong-Macau Ferry Terminal (Sheung Wan)	1800	-	1900

Ferry schedule is for reference only and it is subject to change without prior notice. The final ferry schedule is subject to the date of issuing ticket.  
Reservation of ferry ticket between Hong Kong and Jiuhai is only available in the current 2 months.

Transfer between the pier on Dong'ao Island and Club Med resort takes 10 minutes by buggy.

### Ferry Package Price include

Round trip ferry tickets on economy class • Transfer • Accommodation on twin sharing basis • 3 meals daily • Open bar & snacking • All sporting facilities with a range of tuition • Children's clubs facilities • Evening entertainment

Club Med will try the best to provide the post updated package prices. However, all package prices listed are for reference only and are subject to change without prior notice. Please check with Club Med for the most up-to-date package prices.

### Compulsory Membership Fee

Club Med Membership fee is not included in the above package price.  
HK\$280 for new member and HK\$200 for renewal, inclusive of travel insurance, is required per person aged over 12 years old.  
Club Med Membership is valid for 12 months from the date of deposit payment.  
Membership fees are non-refundable and non-transferrable.

### Deposit & Balance Payment

Booking's departure date is over 60 days from the time of reservations  
Deposit: 50% of package price + membership fee  
Balance payment: 60 days prior to departure

Booking's departure date is less than 60 days from the time of reservations  
Full payment of the total package fee and membership fee is required to secure your booking within 3 days of reservation.

### Cancellation & Revision Charges

Once the deposit paid, your reservation is considered definitive. All initial deposit made are non-refundable and non-transferable. Revision of departure date is allowed once 60 days before departure while air tickets have not been issued. An administration fee of HK\$300 per person per time is required for revision of date thereafter on top of the necessary administrative fee applied by the airlines, ferry and ground transportation company.

Cancellation and revision of booking may be made in writing or by telephone. In cases of late cancellation or revision, the following charges will apply:

- \* 31 days or above prior to departure: 50% of total package fee
- \* 30 - 15 days prior to departure: 80% of total package fee
- \* 14 - 0 days prior to departure: 100% of total package fee

Validity: Until 28 Apr 2016



## Club Med 東澳島Premium Resort (珠海)

### **Winter 2016-2017 Latest Promotion - Terms and Conditions**

Confirmation is subject to availability. Offer cannot be used in conjunction with any other promotions.

**All prices and terms are subject to change without prior notice.**

### **Petit Club Med**

The Petit Club Med, for children aged 2 - 3 years, is available at an additional cost of HK\$440 per child per day. Advance Petit Club Med reservation can only be made for the whole duration of your stay. Places are limited and subject to availability.

**All the above information are subject to change without prior notice.**

### REMARKS :

- [1] Prices are quoted in HKD per person based on double occupancy and subject to change without prior notice.
- [2] Administration fee will be charged on each amendment, after hotel voucher is issued.
- [3] Any cancellation may subject to charge one night / total of stay (100%) penalty (subject to hotel cancellation policy) and handling fee will be charged.
- [4] No refund will be made for no show or early check-out.
- [5] For other terms and conditions, please refer to our "Booking terms and conditions". Please visit our company web site or contact our staff.