



# Club Med Beidahu

## 11月19日全新開幕

Validity: Until 9 Mar 2017

**SPECIAL OFFER**

於2017年1月20日前預訂冬季(2016年12月至2017年3月) Club Med北大壺套票  
 -即可享有以下優惠套票價錢  
 -尊享Club Med 1年會籍(亦適用於舊有會員) (12歲或以上新會員入會費每位\$280; 續會每位\$200; 優惠以最低價錢之會費計算)

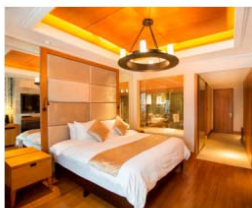
**套票包括 Package Price Includes :**

- ✓ 來回香港航空香港至中國長春機票乙張  
 Round trip Hong Kong Airline HKG- CGQ economy class air ticket
- ✓ 酒店機場來回接送 Roundtrip airport transfer by coach
- ✓ 3/4 晚酒店住宿 3/4 nights accommodation
- ✓ 每日3餐、全天飲品及小食 3 meals, open bar & snacking daily
- ✓ 每日滑雪證及滑雪纜車 Daily Ski pass & Ski Lift
- ✓ 各程度的團體滑雪和滑雪板教學 Group Ski lessons of all levels
- ✓ 兒童與青少年(4-17歲)俱樂部設施 Children's clubs facilities
- ✓ 晚間娛樂節目 Evening entertainment



**5-Day 4-Night Air Package - Thu/Mon (Fixed Departure with Limited Seats)**

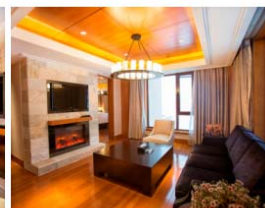
Departure dates :	Deluxe Room - Twin / King Bed			Deluxe Room - Family			Suite			Family Suite		
	Adult	Child 4-11	Child 2-3	Adult	Child 4-11	Child 2-3	Adult	Child 4-11	Child 2-3	Adult	Child 4-11	Child 2-3
Dec 08	8,048	6,028	3,100	9,680	6,988	3,100	11,816	8,284	3,100	14,504	9,892	3,100
Dec 15	10,730	8,152	4,400	12,816	9,398	4,400	15,574	11,064	4,400	19,032	13,136	4,400
Dec 22	12,984	10,056	5,800	15,350	11,484	5,800	18,500	13,374	5,800	22,434	15,740	5,800
Dec 29	13,264	10,224	5,800	15,728	11,708	5,800	19,004	13,668	5,800	23,092	16,132	5,800
Jan 05	9,879	7,270	3,500	11,985	8,544	3,500	14,767	10,221	3,500	18,264	12,314	3,500
Jan 12	11,662	8,860	4,800	13,930	10,232	4,800	16,926	12,038	4,800	20,692	14,292	4,800
Jan 19	10,894	7,882	3,500	13,344	9,352	3,500	16,578	11,298	3,500	20,638	13,734	3,500
Jan 26	15,108	11,491	6,200	18,059	13,259	6,200	21,972	15,619	6,200	26,866	18,550	6,200
Feb 02	13,145	9,594	4,400	16,044	11,336	4,400	19,879	13,643	4,400	24,683	16,523	4,400
Feb 09	9,588	7,100	3,500	11,592	8,312	3,500	14,244	9,896	3,500	17,568	11,900	3,500
Feb 16	9,312	6,932	3,500	11,220	8,084	3,500	13,764	9,608	3,500	16,932	11,516	3,500
Feb 23	9,192	7,220	4,400	10,764	8,168	4,400	12,852	9,416	4,400	15,444	10,976	4,400
Mar 02	8,292	6,680	4,400	9,564	7,448	4,400	11,244	8,456	4,400	13,332	9,704	4,400
Mar 09	7,392	5,780	3,500	8,664	6,548	3,500	10,344	7,556	3,500	12,432	8,804	3,500



Deluxe Room - King Bed



Deluxe Room - Family



Suite



Family Suite

# Club Med Beidahu

## 11月19日全新開幕

Club Med  
Premium all-inclusive resorts

Validity: Until 9 Mar 2017

### 4-Day 3-Night Air Package - Mon/Thu (Fixed Departure with Limited Seats)

Departure dates :	Deluxe Room - Twin / King Bed			Deluxe Room - Family			Suite			Family Suite		
	Adult	Child 4-11	Child 2-3	Adult	Child 4-11	Child 3	Adult	Child 4-11	Child 2-3	Adult	Child 4-11	Child 2-3
Dec 19	10,303	8,166	5,100	12,004	9,195	5,100	14,272	10,560	5,100	17,107	12,261	5,100
Dec 26	10,723	8,418	5,100	12,571	9,531	5,100	15,028	11,001	5,100	18,094	12,849	5,100
Jan 23	12,306	9,294	4,900	14,750	10,750	4,900	18,000	12,700	4,900	22,056	15,144	4,900
Jan 30	15,108	11,290	5,700	18,228	13,162	5,700	22,362	15,658	5,700	27,536	18,752	5,700



#### Transportation

Flight: Hong Kong - Changchun - Hong Kong by Hong Kong Airlines

Transfer between Changchun Longjia Airport and Club Med resort takes 2 hours by coach.

Flight Schedule:                      Hong Kong - Changchun                      HX 422                      1030-1500  
    Changchun - Hong Kong                      HX 423                      1605-2035

Tickets are valid for flight and date shown.

#### Package Price include

Round trip economy class air ticket • Coach Transfer • Accommodation on twin sharing basis • 3 meals daily • Open bar & snacking • Daily ski pass  
 • Ski lift • Ski lesson of all levels • Children's clubs facilities • Evening entertainment

Club Med will try the best to provide the post updated package prices. However, all package prices listed are for reference only and are subject to change without prior notice. Please check with Club Med for the most up-to-date package prices.

The package prices listed do not include taxes, fuel surcharge, ski wear and ski equipment rental.

The package prices listed do not include taxes surcharge and airport construction fee (total of HK\$320 per adult and HK\$90 per child aged under 12 years old).

The final charges are subject to the date of full payment.

#### Compulsory Membership Fee

Club Med Membership fee is not included in the above package price.

HK\$280 for new member and HK\$200 for renewal, inclusive of travel insurance, is required per person aged over 12 years old.

Club Med Membership is valid for 12 months from the date of deposit payment.

Membership fees are non-refundable and non-transferrable.

#### Deposit & Balance Payment

Booking's departure date is over 60 days from the time of reservations

Deposit: 50% of package price + membership fee

Balance payment: 60 days prior to departure

Booking's departure date is less than 60 days from the time of reservations

Full payment of the total package fee and membership fee is required to secure your booking within 3 days of reservation.

# Club Med Beidahu

## 11月19日全新開幕

Club Med  
Premium all-inclusive resorts

Validity: Until 9 Mar 2017

### **Cancellation & Revision Charges**

Once the deposit paid, your reservation is considered definitive. All initial deposit made are non-refundable and non-transferable. Revision of departure date is allowed once 60 days before departure while air tickets have not been issued. An administration fee of HK\$300 per person per time is required for revision of date top of the necessary administrative fee applied by the airlines, ferry and ground transportation company.

Cancellation and revision of booking may be made in writing or by telephone. In cases of late cancellation or revision, the following charges will apply:

- \* 31 days or above prior to departure: 50% of total package fee
- \* 30 - 15 days prior to departure: 80% of total package fee
- \* 14 - 0 days prior to departure: 100% of total package fee

### **Winter 2016-2017 Latest Promotion - Terms and Conditions**

Confirmation is subject to availability. Offer cannot be used in conjunction with any other promotions.

**All prices and terms are subject to change without prior notice.**

**Club Med Beidahu welcome children from 2 years old.**

### **Petit Club Med**

The Petit Club Med, for children aged 2 - 3 years, is available at an additional cost of HK\$440 per child per day. Petit Club Med can only be booked for the complete duration of your stay, not on a daily basis. Places are limited and subject to availability.

**All the above information are subject to change without prior notice.**

### REMARKS :

- [1] Prices are quoted in HKD per person based on double occupancy and subject to change without prior notice.
- [2] Administration fee will be charged on each amendment, after hotel voucher is issued.
- [3] Any cancellation may subject to charge one night / total of stay (100%) penalty (subject to hotel cancellation policy) and handling fee will be charged.
- [4] No refund will be made for no show or early check-out.
- [5] For other terms and conditions, please refer to our "Booking terms and conditions". Please visit our company web site or contact our staff.

李小姐 / 顏小姐 MOON 查詢電話 (852) 2332 1633

瀏覽更多旅遊資訊 [www.exholiday.com](http://www.exholiday.com)

辦公時間：星期一至五 09:00-18:00 星期六：09:00-16:00 (星期日及公眾假期休息)

自置物業地址：旺角通菜街 1A-1L 號威達商業大廈 4 字樓 411,412A,412C-F 室

**Express Holiday Ltd**  
**運通假期有限公司**