

優質旅遊服務  
會員報名再有優惠



運通假期有限公司  
EXPRESS HOLIDAY LIMITED  
Since 1988

查詢 2332 1633

## 8 Days Classic Antarctica Air - Cruise

經典南極 8 天之旅

Magellan Explorer

Antarctica21

Fly & Sail Expeditions

01 Dec 2020 – 20 Feb 2021 Punta Arenas return 往蓬塔阿雷纳斯 (智利)



Magellan Explorer

PASSENGERS: 100 maximum  
EXPEDITION STAFF & CREW: 60  
LENGTH: 90.7 m  
BREADTH: 16.2 m  
DRAFT: 4.3 m

Day 日期	ITINERARY
1	<b>Start of the Air-Cruise</b> Arrive in Punta Arenas, Chile, before 2 PM where you are welcomed by Antarctica21 staff and transferred to your hotel. In the afternoon, you attend a mandatory briefing that provides important information about your voyage and reviews the essential guidelines for Antarctic visitors. Later, gather for a welcome dinner and meet your fellow adventurers while enjoying a typical regional menu.
2	<b>Scheduled flight to Antarctica</b> Your Antarctic adventure begins with a two-hour flight from Punta Arenas to King George Island, in the South Shetland Islands. As you exit the airplane, the clear Antarctic air fills your lungs for the first time. The 2-km (1.25-mi) walk to the shore, where you board a Zodiac to embark your expedition vessel, takes you through Chile's Frei Station and Russia's Bellingshausen Station.
3 – 6	<b>Exploring Antarctica</b> Cruise between the South Shetland Islands and the western coast of the Antarctic Peninsula, sailing along ice-filled fjords and among spectacular icebergs, while enjoying the company of seabirds, penguins, seals and whales. Each day, disembark by Zodiac and explore the landscape together with expert polar guides. On board the ship, attend an engaging program of lectures and presentations, and enjoy spectacular views from the lounge while sharing your daily adventures with fellow guests. No journey is the same and flexibility is the key to success in Antarctica. The Expedition Team plans the voyage route to take advantage of the ever-changing opportunities provided by Nature, crafting a unique and extraordinary experience each time. While the exact itinerary changes with each expedition, you will explore several spots that offer the best possible overview of the varied Antarctic environment. Your voyage may include visits to sites such as Paulet Island, Hope Bay, Port Lockroy, Petermann Island, Paradise Bay, Deception Island, the Lemaire Channel, or many other magnificent places.
7	<b>Scheduled return flight from Antarctica</b> Return to King George Island and bid farewell to Antarctica before boarding the flight back to Punta Arenas. Upon arrival, transfer to your hotel for the night. (Note: Meals in Punta Arenas are at your leisure and not included in the program).
8	<b>End of the Air-Cruise</b> After breakfast, transfer to the Punta Arenas airport for your onward flight.

查詢電話 (852) 2332 1633

瀏覽更多旅遊資訊 [www.exholiday.com](http://www.exholiday.com)

辦公時間：星期一至五 09:00-18:00 星期六 09:00-13:00 (星期日及公眾假期休息)

自置物業地址：旺角通菜街 1A-1L 號威達商業大廈 4 字樓 412 室

Express Holiday Ltd

運通假期有限公司





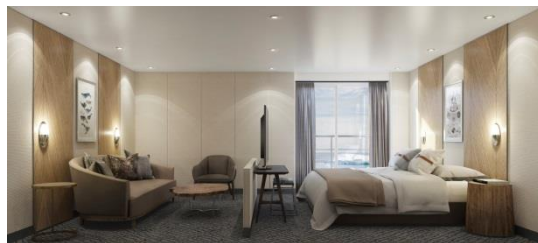
查詢 2332 1633

All prices are based on twin-sharing basis in USD 價格以二人一房每位美金計算

Sailing date 啟航日期	Triple Suite	Porthole Cabin	Veranda Cabin	Deluxe Veranda Cabin	Penthouse Suite	Grand Suite
01Dec – 08Dec 2020	USD 12,995 +	USD 13,995 +	USD 16,995 +	USD 17,995 +	USD 21,995 +	USD 23,995 +
06Dec – 13Dec 2020	USD 12,995 +	USD 13,995 +	USD 16,995 +	USD 17,995 +	USD 21,995 +	USD 23,995 +
11Dec – 18Dec 2020	USD 12,995 +	USD 13,995 +	USD 16,995 +	USD 17,995 +	USD 21,995 +	USD 23,995 +
16Dec – 23Dec 2020	USD 12,995 +	USD 13,995 +	USD 16,995 +	USD 17,995 +	USD 21,995 +	USD 23,995 +
21Dec – 28Dec 2020	USD 14,595 +	USD 15,795 +	USD 18,995 +	USD 19,995 +	USD 23,995 +	USD 26,995 +
26Dec 2020 – 02Jan 2021	USD 14,595 +	USD 15,795 +	USD 18,995 +	USD 19,995 +	USD 23,995 +	USD 26,995 +
31Dec 2020 – 07Jan 2021	USD 14,595 +	USD 15,795 +	USD 18,995 +	USD 19,995 +	USD 23,995 +	USD 26,995 +
14Jan – 21Jan 2021	USD 14,595 +	USD 15,795 +	USD 18,995 +	USD 19,995 +	USD 23,995 +	USD 26,995 +
19Jan – 26Jan 2021	USD 14,595 +	USD 15,795 +	USD 18,995 +	USD 19,995 +	USD 23,995 +	USD 26,995 +
31Jan – 07Feb 2021	USD 14,595 +	USD 15,795 +	USD 18,995 +	USD 19,995 +	USD 23,995 +	USD 26,995 +
05Feb – 12Feb 2021	USD 14,595 +	USD 15,795 +	USD 18,995 +	USD 19,995 +	USD 23,995 +	USD 26,995 +
10Feb – 17Feb 2021	USD 14,595 +	USD 15,795 +	USD 18,995 +	USD 19,995 +	USD 23,995 +	USD 26,995 +
15Feb – 22Feb 2021	USD 14,595 +	USD 15,795 +	USD 18,995 +	USD 19,995 +	USD 23,995 +	USD 26,995 +
20Feb – 27Feb 2021	USD 14,595 +	USD 15,795 +	USD 18,995 +	USD 19,995 +	USD 23,995 +	USD 26,995 +

## RATES INCLUDE

- For air-cruises starting in Punta Arenas, group transfers airport/hotel on Day 1.
- 1 overnight with breakfast in Punta Arenas at the Cabo de Hornos Hotel or similar on the Day of the Scheduled Return Flight from Antarctica.
- Flight from Punta Arenas to Frei Station on King George Island and/or vice versa as indicated in the program corresponding to each voyage.
- Daily buffet breakfast and lunch on board ship offering a wide choice of dishes.
- Wine, beer, juice, and soft drinks served with lunch and dinner on board ship.
- All guided shore excursions.
- Comprehensive pre- and post-voyage information material.
- Contingency Plan as described further on.
- For air-cruises starting in Punta Arenas, 1 overnight with breakfast in Punta Arenas at the Cabo de Hornos Hotel or similar, with a welcome dinner including drinks on Day 1.
- Group transfers airport/hotel on the Day of the Scheduled Return Flight from Antarctica, and group transfers hotel/airport on last Day of the air-Cruise.
- Ship cruise along the Antarctic Peninsula as indicated in the program corresponding to each voyage.
- Daily served dinner on board ship offering a choice of three main courses.
- Coffee, tea, chocolate, cappuccino, water and snacks on board ship throughout the expedition.
- Lectures and entertainment on board.
- Loan of waterproof boots for landing in Antarctica.
- IAATO passenger fee.



### Terms & Conditions 條款及細則

- All prices are in USD, based on twin-sharing availability on 12Aug19.
- Subject to any taxes and surcharges which are imposed by the service providers before departure.
- If a material alteration to a package tour after the tour is commenced for reasons beyond control, the travel agency may impose any charges to his clients as a result of an increase in operation costs.
- Cancellation fee of HK\$1,000 per person per transaction will be levied on top of service providers' policy.
- Cruise line may reserves the rights to make changes on itinerary, timing on all embarkations/disembarkations, and port(s) call cancellation due to weather condition or specific reasons. These changes are not considered as against "The Trade Descriptions Ordinance, Chapter 362, Laws of Hong Kong".
- Passengers shall not make claim against the cruise line or/and the travel agency for any compensation.
- Other terms and conditions remain the same as laid on [antarctica21.com](http://antarctica21.com)
- All information is subject to change without prior notice.
- 所有費用按 2019 年 8 月 12 日之艙房類別作參考並以美元每位計算。
- 服務供應商保留於行程出發前收取有關調整附加費或其他應繳稅費。
- 敘做訂位後如因不得已之理由更改項目而增加經營成本，本公司保留向顧客徵收額外費用之權利。
- 乘客如欲取消行程，服務供應商將按照取消政策處理及另行收取每位每交易計之行政費用港幣\$1,000。
- 所有停靠港之啟航/抵達/停靠時間會按航行情況有所調整/更改/取消，以郵輪公司最後安排為準，乘客同意及接受郵輪公司有最終的決定權及不會當作違反商品說明條例，亦就此放棄向郵輪公司及本公司追討或索償。
- 郵輪公司之其他條款細則，以網站 [antarctica21.com](http://antarctica21.com) 或英文行程書內為準。
- 所有資料如有任何變更恕不另行通知。

查詢電話 (852) 2332 1633

瀏覽更多旅遊資訊 [www.exholiday.com](http://www.exholiday.com)

辦公時間：星期一至五 09:00-18:00 星期六：09:00-13:00 (星期日及公眾假期休息)

自置物業地址：旺角通菜街 1A-1L 號威達商業大廈 4 字樓 412 室

Express Holiday Ltd

運通假期有限公司